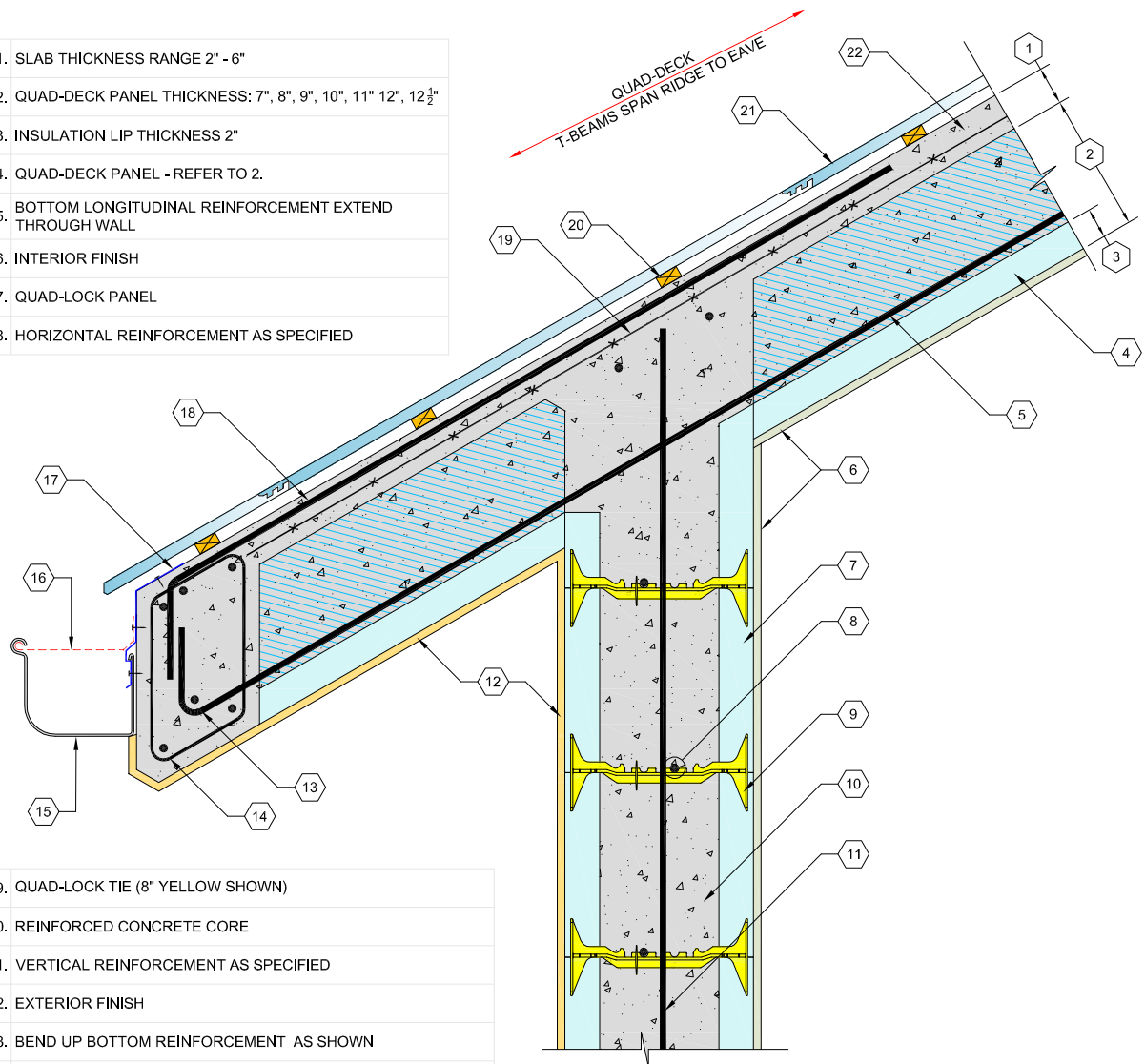


1. SLAB THICKNESS RANGE 2" - 6"
2. QUAD-DECK PANEL THICKNESS: 7", 8", 9", 10", 11" 12", 12½"
3. INSULATION LIP THICKNESS 2"
4. QUAD-DECK PANEL - REFER TO 2.
5. BOTTOM LONGITUDINAL REINFORCEMENT EXTEND THROUGH WALL
6. INTERIOR FINISH
7. QUAD-LOCK PANEL
8. HORIZONTAL REINFORCEMENT AS SPECIFIED



9. QUAD-LOCK TIE (8" YELLOW SHOWN)
10. REINFORCED CONCRETE CORE
11. VERTICAL REINFORCEMENT AS SPECIFIED
12. EXTERIOR FINISH
13. BEND UP BOTTOM REINFORCEMENT AS SHOWN
14. PERIMETER BEAM REINFORCEMENT AS SPECIFIED
15. GUTTER
16. GUTTER BRACKET
17. TRANSITION STRIP
18. TOP (NEGATIVE) REINFORCEMENT
19. SLAB REINFORCEMENT 6x6 WELDED WIRE MESH OR LONGITUDINAL AND TRANSVERSE REBAR
20. FURRING AS SPECIFIED
21. ROOFING AS SPECIFIED
22. CONCRETE TO BE CALLED BY THE ENGINEER OF RECORD

**QUAD-LOCK**  
Building Systems Ltd.

Quad-Lock Building Systems Ltd.  
7398 - 132nd Street  
Surrey, BC V3W 4M7  
Canada

888.711.5625 - Toll Free  
604.590.3111  
604.590.8412 - fax  
www.quadlock.com

IT IS THE RESPONSIBILITY OF THE USER TO COMPLY WITH ALL APPLICABLE REGULATIONS AND BUILDING CODE REQUIREMENTS CONCERNING THE USE OF THESE PRODUCTS.  
IT IS FURTHER THE RESPONSIBILITY OF THE USER TO RESEARCH AND UNDERSTAND SAFE METHODS OF USE AND HANDLING OF THESE PRODUCTS.

## PITCHED ROOF DETAIL QUAD-DECK PERPENDICULAR TO WALL

DATE:	2009-01-21	SCALE:	NOT TO SCALE
REVISION NO:	R-02	PROJECT:	
REVISION DATE:	2009-07-10	CUSTOMER:	
DRAWN BY:	Z. PROSTRAN	APPROVED BY:	H.M.K. & D.J.B.
			DRAWING NO: <b>QD-206</b>