

BILL OF MATERIALS SMOKEHOUSE

CONCRETE 1:3:5 mix
10 bags cement, 1 cu. yd. sand, 1½ cu. yds. gravel.

LUMBER

3 pieces 2" x 6" x 6'-0" cross ties.
3 " 2" x 4" x 12'-0" header, bench and hangers.
12 " 2" x 4" x 10'-0" sills, studs, and rafters.
23 " 2" x 4" x 8'-0" " " plates, and hangers.
2 " 1" x 10" x 8'-0" bench and vent doors.
2 " 1" x 6" x 10'-0" ridge and trim.
2 " 1" x 6" x 7'-0" door battens.
6 " 1" x 4" x 10'-0" corner boards and trim.
6 " 1" x 4" x 8'-0" trim.
6 " 1" x 6" x 7'-0" T & G boards for door.
275 ft. B.M. 6" drop siding.
120 ft. B.M. roof sheathing.
Roofing or asphalt shingles to cover 100 sq. ft. roof area.

MISCELLANEOUS

7-½ x 12" anchor bolts, with nuts and washers.
1 pair 8" Tee hinges, 1 safety hasp.
2-pair 2" x 2" hinges for vent doors.
1-piece metal flashing-6" x 40"
4 lin. ft. #30-mesh wire screen-10" wide.
4 lengths 6" T.C. sewer pipe, 1-6" 90° T.C. elbow.
Nails, hanging hooks, and paint not included.

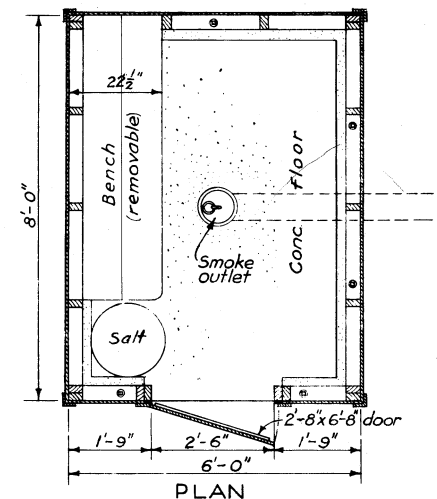
FIREBOX

CONCRETE 1:2:3 mix.
6 bags cement, ½ cu. yd. sand, ¾ cu. yd. broken
hard brick, gravel or stone, (brick more heat resistant).

MISCELLANEOUS

10 lin. ft. 6" x 6" No. 9 wire fabric 30" wide.
6 pieces ¼" steel rods 42" long.
10 " ¼" " 32"
2 " ½" pipe 36" long.
1-piece 24" x 32" metal, sliding door.

A



BILL OF MATERIALS SMOKEHOUSE

CONCRETE AND MORTAR.

Concrete 1:3:5 mix. Mortar 1:3 + 10% lime.
14 bags cement, 1½ cu. yds. sand, 2 cu. yds. gravel
65 lbs. hydrated lime.

142 8" x 8" x 16" smooth face masonry units.

12 8" x 4" x 16" " " " "

2 8" x 4" x 8" " " " "

14 8" x 8" x 8" " " half " "

52 8" x 8" x 16" " " corner " "

12 8" x 8" x 16" " " jamb " "

12 8" x 8" x 8" " " half " "

100 common brick

LUMBER

4 pieces 2" x 6" x 8'-0" plates and door jambs.

2" x 6" x 7'-0" " " cross ties.

2" x 4" x 10'-0" rafters, gable-end studs.

2" x 4" x 6'-0" bench and removable hangers.

2" x 3" x 8'-0" door casing.

1" x 6" x 10'-0" " battens, ridge, trim.

1" x 4" x 10'-0" " trim.

1" x 12" x 6'-0" bench.

1" x 10" x 10'-0" " and vent doors.

120 ft. B.M. roof sheathing. 56 ft. B.M. 1½" T & G door, gables.

Roofing or asphalt shingles to cover 100 sq. ft. roof area.

MISCELLANEOUS

8-½ x 14" anchor bolts. 1 pr. 8" Tee hinges. 1 pr. 2" x 2" hinges.

6" x 38" metal flashing. 4 lin. ft. #30-mesh screen 10" wide.

Nails, hanging hooks, and paint not included.

FIREBOX

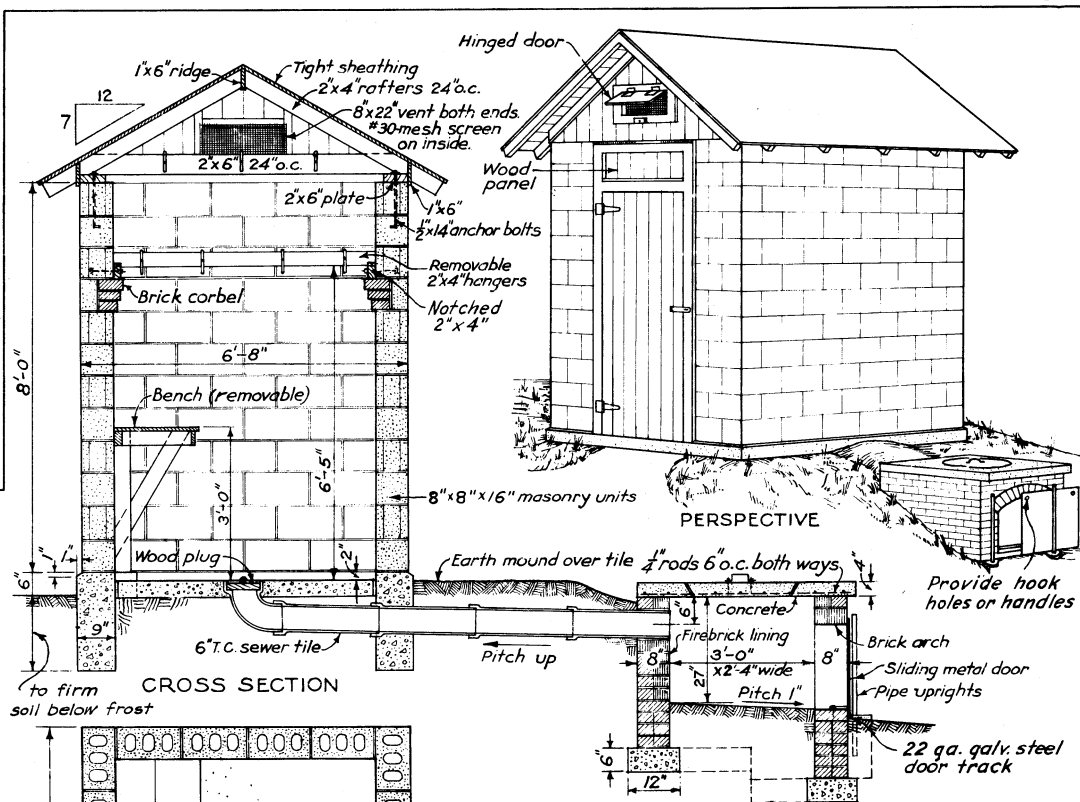
7 bags cement, ½ cu. yd. sand, ¾ cu. yd. gravel.

450 common brick. 90 firebrick.

9-¼ steel rods 40" long. 6-¼ steel rods 48" long.

2 pieces ½" pipe 36" long.

1 metal sliding door 24" x 32".



B

COOPERATIVE EXTENSION WORK IN
AGRICULTURE AND HOME ECONOMICS
STATE OF TENNESSEE
UNIVERSITY OF TENNESSEE
AND
UNITED STATES DEPARTMENT OF AGRICULTURE COOPERATING

SMOKE HOUSE

USDA '65 EX. 5695 SHEET 1 OF 1